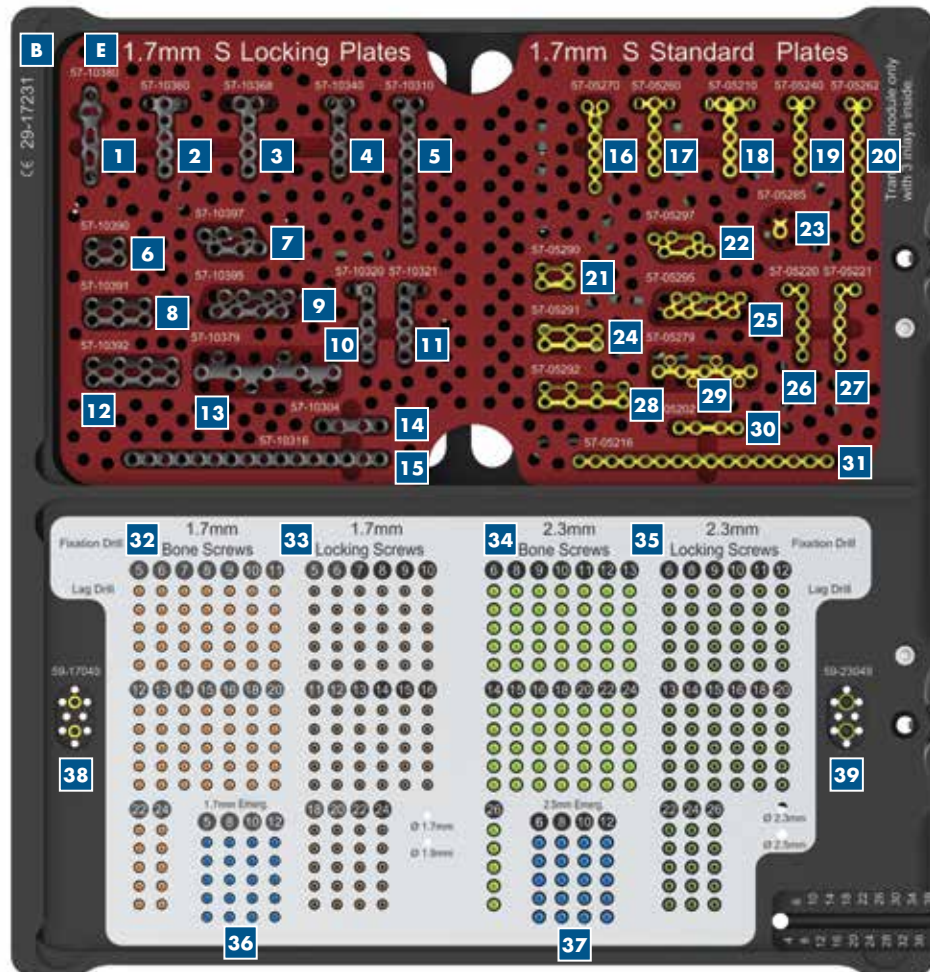


Tray layout card – Stryker Hand Plating System

Plates and VariAx 2 screws



Ref #	Description	Qty.	Ref #	Description	Qty.
A 29-13009	4 Level sterilization container	1	E 29-51717	Inlay for 1.7mm S Profyle Hand / 1.7mm VariAx Hand Plates	1
B 29-17231	VariAx hand locking plate implant module	1			

1.7mm S locking plates

Ref #	Description	Holes	Qty.
1 57-10380	Rotation	5	2
2 57-10360	T, regular	7	2
3 57-10368	T, wide	8	2
4 57-10340	T, narrow	6	2
5 57-10310	T, narrow	10	2
6 57-10390	3-D	2x2	2
7 57-10397	3-D	2x2+2	2
8 57-10391	3-D	3x2	2
9 57-10395	3-D, replantation	4x2	2
10 57-10320	L, right	6	2
11 57-10321	L, left	6	2
12 57-10392	3-D	4x2	2
13 57-10379	Z, narrow	9	2
14 57-10304	Straight	4	2
15 57-10316	Straight	16	2

1.7mm S standard plates

Ref #	Description	Holes	Qty.
16 57-05270	Y-Plate, narrow	7	2
17 57-05260	T, regular	7	2
18 57-05210	T, wide	8	2
19 57-05240	T, narrow	6	2
20 57-05262	T, narrow	10	2
21 57-05290	3-D	2x2	2
22 57-05297	3-D	2x2+2	2
23 57-05285	Prong plate	1	2
24 57-05291	3-D	3x2	2
25 57-05295	3-D, replantation	4x2	2
26 57-05220	L, right	6	2
27 57-05221	L, left	6	2
28 57-05292	3-D	4x2	2
29 57-05279	Z, narrow	9	2
30 57-05202	Straight	4	2
31 57-05216	Straight	16	2

VariAx 2 locking screws / bone screws

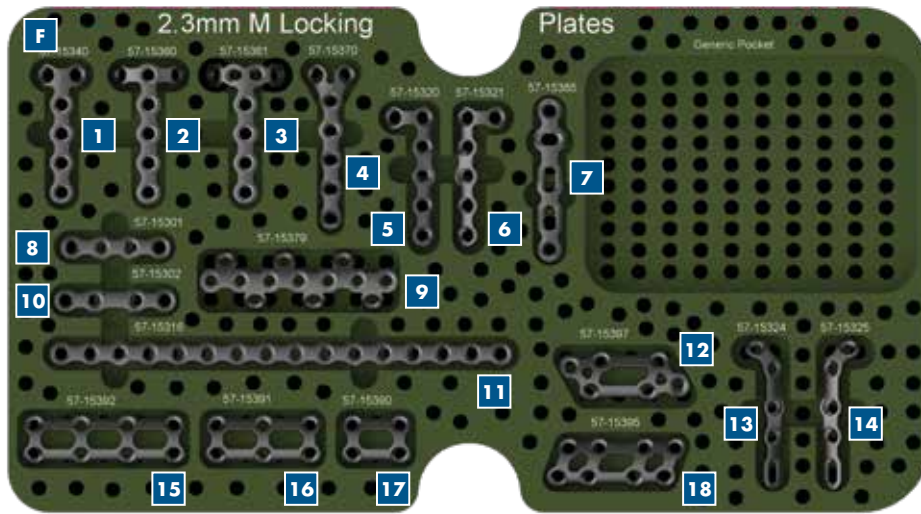
Ref #	Description	Length
32 662605-662624	1.7mm, Bone screws	5-24mm
33 662505-662524	1.7mm, Locking screws	5-24mm
34 663806-663826	2.3mm, Bone screws	6-26mm
35 663706-663726	2.3mm, Locking screws	6-26mm
36 662705-662712	1.9mm Emergency screws	5-12mm
37 663906-663912	2.5mm Emergency screws	6-12mm

Washers

Ref #	Description	Qty.
38 59-17049E	Washer for 1.7mm Bone Screws	2
39 59-23049E	Washer for 2.3mm Bone Screws	2

Tray layout card – Stryker Hand Plating System

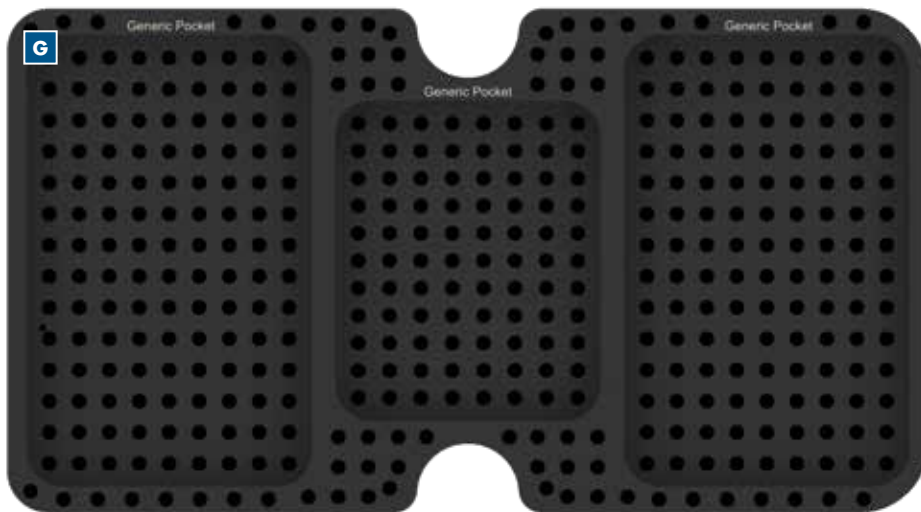
Plates



Ref #	Description	Qty.
F 29-54023	Inlay for 2.3mm VariAx Hand plates	1
G 29-50000	Generic tray inlay	1

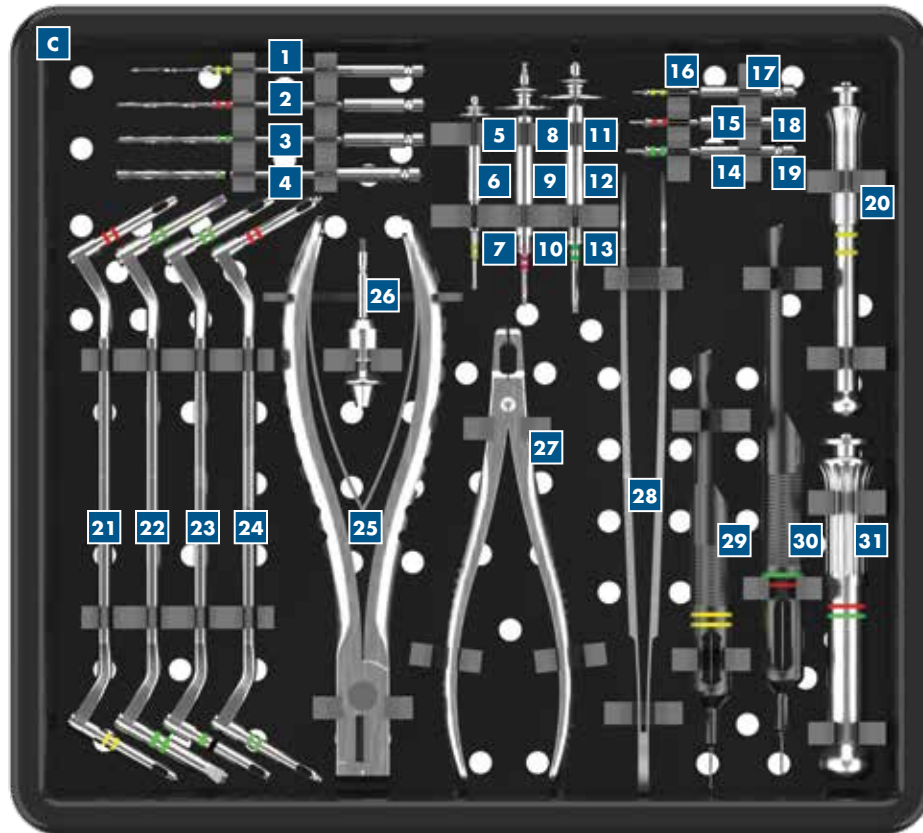
2.3mm M locking plates

Ref #	Description	Holes	Qty.	Ref #	Description	Holes	Qty.
1 57-15340	T, narrow	6	2	10 57-15302	Straight	4 w/ bar	2
2 57-15360	T, regular	7	2	11 57-15316	Straight	16	2
3 57-15361	T, wide	8	2	12 57-15397	3-D	2×2+2	2
4 57-15370	Y	7	2	13 57-15324	MC5, left	5	2
5 57-15320	L, right	6	2	14 57-15325	MC5, right	5	2
6 57-15321	L, left	6	2	15 57-15392	3-D	4×2	2
7 57-15385	Rotation	5	2	16 57-15391	3-D	3×2	2
8 57-15301	Straight	4	2	17 57-15390	3-D	2×2	2
9 57-15379	Z	13	2	18 57-15395	3-D	4×2	2



Tray layout card – Stryker Hand Plating System

Instruments



Ref #	Description	Qty.
C 29-13456	Instrument tray insert	1

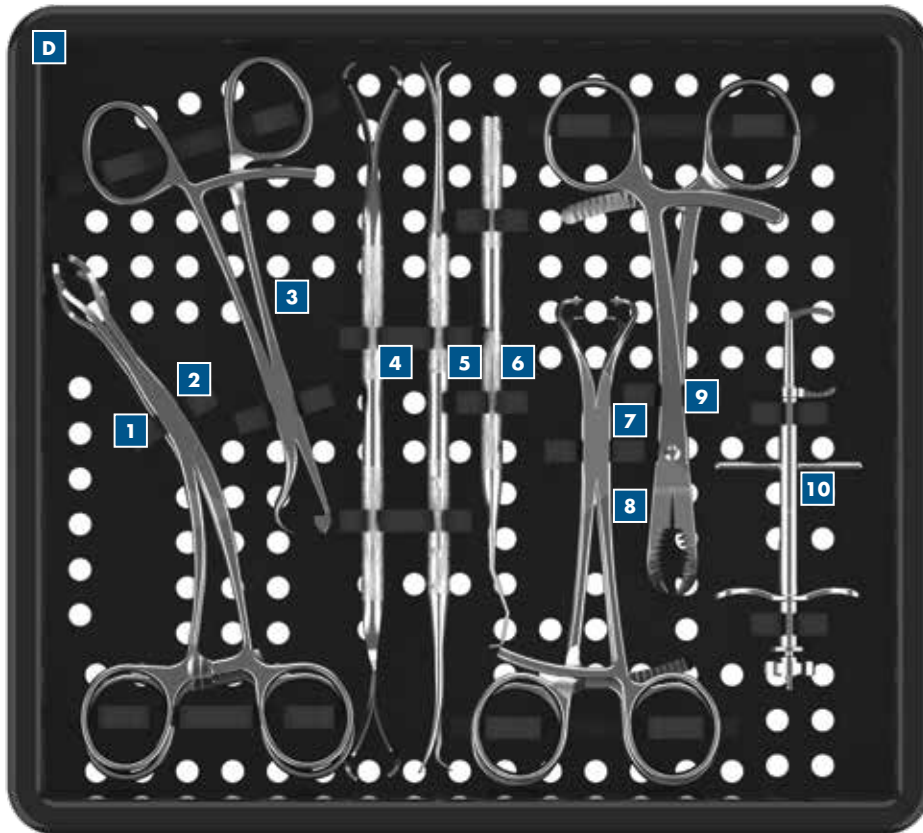
Instruments

Ref #	Description	Qty.	Ref #	Description	Qty.
1	60-10322 Twist drill, 1.0 × 22mm, AO	2	17	60-80312 AO Quick Countersink for 1.2mm screws	1
2	60-14326 Twist drill, 1.4 × 27mm, AO	2	18	62-17335 Screw Removal Blade, 1.7mm, Dental	1
3	60-19326 Twist drill, 1.9 × 27mm, AO	2	19	62-23335 Screw Removal Blade, 2.3mm, Dental	1
4	60-25326 Twist drill, 2.5 × 26mm, AO	2	20	62-12555 Screwdriver handle, 1.2mm	1
5	62-12050 Tension pliers, 1.2mm	1	21	62-51217 Standard drill guide, 1.2/1.7mm	1
6	62-12055 Tension sheath, 1.2mm	1	22	62-52323 Compression drill guide, 2.3mm	1
7	62-12333 Screwdriver blade, 1.2mm, cross-pin	1	23	62-52325 Standard drill guide, 2.3/2.5mm	1
8	62-17050 Tension pliers, 1.7mm	1	24	62-51723 Polyaxial locking drill guide, 1.7/2.3mm	1
9	62-17055 Tension sheath, 1.7mm	1	25	62-20125 Plate cutter	1
10	705505 Screwdriver blade, 1.7mm, T5	1	26	62-50104 Drill adapter	optional
11	62-23050 Tension pliers, 2.3mm	1	27	62-21723 Plate bending pliers	2
12	62-23055 Tension sheath, 2.3mm	1	28	01-08115 Angled self retaining plate forceps	1
13	705506 Screwdriver blade, 2.3mm, T6	1	29	62-12112 Depth gauge, 1.2mm	1
14	60-80323 Countersink for 2.3mm screws, AO	1	30	62-17232 Depth gauge, 1.7/2.3mm	1
15	60-80317 Countersink for 1.7mm screws, AO	1	31	62-23170 Screwdriver handle, 1.7/2.3mm	1
16	62-12335 Screw removal blade, 1.2mm, dental	1			



Tray layout card – Stryker Hand Plating System

Bone reduction instruments



Ref #	Description	Qty.
D 29-13458	Bone reduction tray insert	1

Bone reduction instruments

Ref #	Description	Qty.
1 07-30350	Small forceps	1
2 07-30351	Medium forceps	1
3 07-30365	Verbrugge forceps	1
4 07-10006	2-Sided Hohmann retractor	2
5 07-10021	2-Sided Periosteal elevator	2

Ref #	Description	Qty.
6 07-10175	Bone hook	1
7 07-30111	Sharp tip Lewin bone holding forceps	1
8 07-30355	Lewin bone holding forceps	1
9 07-30600	Lobster claw	1
10 07-30400	Auerbach bone reduction clamp	1



A surgeon must always rely on his or her own professional clinical judgment when deciding whether to use a particular product when treating a particular patient. Stryker does not dispense medical advice and recommends that surgeons be trained in the use of any particular product before using it in surgery.

The information presented is intended to demonstrate the breadth of Stryker product offerings. A surgeon must always refer to the package insert, product label and/or instructions for use before using any Stryker product. Products may not be available in all markets because product availability is subject to the regulatory and/or medical practices in individual markets. Please contact your Stryker representative if you have questions about the availability of Stryker products in your area. Stryker Corporation or its divisions or other corporate affiliated entities own, use or have applied for the following trademarks or service marks: Stryker, VariAx. All other trademarks are trademarks of their respective owners or holders.

